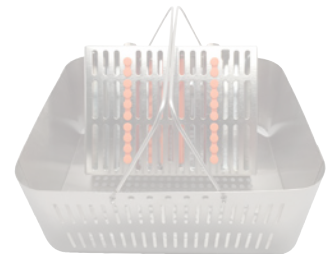


ultrasonic cleaners

enzymes



TRI-CLEAN™



*From Dirty to Clean and Everything
In Between...it's BrandMax Clean!*

www.BrandMax.us

BrandMax®

*From Dirty to Clean and Everything
In Between... It's BrandMax Clean!*



To Our Valued Customers,

Our expanding BrandMax team would like to thank you, our customer, for giving us the opportunity to earn your business during this most recent year of rapid growth. We continue to work hard every day to exceed your expectations by providing superior customer service and the most products-per-dollar of any instrument care and cleaning company in the USA!

As a result of our dedication to infection prevention, we developed our Tri-Clean Ecosystem. The BrandMax Tri-Clean Ecosystem will help produce cleaner instruments, prolong instrument life and ultimately improve infection prevention. Call us today to learn how our Tri-Clean Ecosystem can be implemented in your facility.

We thank you for your continued support and wish you and your family a prosperous and healthy year!

Sincerely,

Scott Haralson
CEO & Founder
BrandMax



Supporting Oral Health For Better Health.™

Call Toll Free: 1-844-874-2532 or 404-418-8499
Email: CustomerService@BrandMax.us



Table of Contents

Tri-Clean Ultrasonic Cleaners	4-5
Tri-Clean Enzymatic Cleaners	6-7
Accessories	8-9
Ultrasonic Cleaner Cross Reference	10
Instrument Cleaning Instructions	11



Call Toll Free: 1-844-874-2532 or 404-418-8499
Email: CustomerService@BrandMax.us

*From Dirty to Clean and Everything
In Between... It's BrandMax Clean!*



Tri-Clean by BrandMax Ultrasonic Cleaners

Tri-Clean ultrasonic cleaners by BrandMax provide superior cleaning power which results in cleaner instruments. All Tri-Clean ultrasonic units come standard with heating element, cycle time controller and stainless steel basket. There is no need to pay extra for these valuable options when *BrandMax provides them for free!*

Take the *Tri-Clean* Challenge ...

FEATURE	<i>Tri-Clean</i>	Competitor	BENEFIT
All stainless steel construction	✓	?	Scratch resistant, durable and easy to clean
Stainless steel drain valve	✓	?	Easy and effective draining of soiled cleaning solution
Digital timer	✓	?	Control time for worry free cleaning cycles
Superior acoustic pulse generators	✓	?	Powerful cavitations loosen bio-burden from instruments
Heating element included	✓	?	Expensive option included for free!
Stainless steel basket included	✓	?	Expensive option included for free!
Works with all popular cassette systems	✓	?	Supports instrument management
2 year warranty on unit, electronics and transducers	✓	?	Comprehensive protection for your investment
Superior customer service	✓	?	"Best in Class" product support

Model #	Cleaning Tank Capacity Gallons/Liters	Temp Range	Timer Setting	Power Sonic/Heat	Tank Dimensions* L x W x H (in.)	Basket Dimensions L x W x H (in.)	Overall Dimensions L x W x H (in.)	Unit Weight (lbs.)	Shipping Weight (lbs.)	Shipping Dimensions L x W x H (in.)
COUNTER-TOP MODELS – SPECIFICATIONS FOR SN 3260 AND HIGHER										
U-5LH	1.05 gal / 4L	68-120 °F 20-60 °C	1 - 99 min.	120W / 200 W	9.5 x 5.5 x 6 in.	8 x 4 x 4.25 in.	11 x 7 x 10.75 in.	11 lbs.	13 lbs.	15 x 10 x 13 in.
U-10LH	2.64 gal / 10L	68-120 °F 20-60 °C	1 - 99 min.	220W / 350 W	12 x 9.5 x 6 in.	10.5 x 8 x 4.25 in.	13.5 x 11 x 11.5 in.	17 lbs.	22 lbs.	18 x 15 x 15 in.
U-13LH	3.43 gal / 13L	68-120 °F 20-60 °C	1 - 99 min.	300W / 450 W	13 x 11.8 x 6 in.	11.5 x 10.5 x 4.25 in.	14.75 x 13.75 x 13 in.	25 lbs.	32 lbs.	20 x 17 x 15 in.
U-19LH	4.94 gal / 19L	68-120 °F 20-60 °C	1 - 99 min.	300W / 450W	13 x 11.8 x 8 in.	11.5 x 10.5 x 6.75 in.	14.75 x 13.75 x 15 in.	29 lbs.	36 lbs.	20 x 17 x 17 in.
U-20LH	5.06 gal / 20L	68-120 °F 20-60 °C	1 - 99 min.	430W / 650 W	20 x 12 x 6 in.	18.5 x 11 x 4.25 in.	21.75 x 13.75 x 13 in.	36 lbs.	42 lbs.	28 x 17 x 15 in.

For counter top units, please add 2" to length dimension for external drain spout. | 220V option available as special order.

Call Toll Free: 1-844-874-2532 or 404-418-8499
Email: CustomerService@BrandMax.us



Shown with standard CK3 control panel.

Tri-Clean by BrandMax Recessed Ultrasonic Cleaners

Tri-Clean recessed ultrasonic cleaning units offer an attractive alternative to above counter models. Our all stainless steel recessed units offer the same premium features and benefits as our above counter models but also an extended control cord for flush mount control panel.

Model #	Cleaning Tank Capacity Gallons/Liters	Temp Range	Timer Setting	Power Sonic/ Heat	Tank Dimensions L x W x H (in.)	Basket Dimensions L x W x H (in.)	Overall Dimensions L x W x H (in.)	Minimum Counter Opening W x D (in.)	Unit Weight (lbs.)	Shipping Weight (lbs.)	Shipping Dimensions L x W x H (in.)
RECESSED MODELS – SPECIFICATIONS FOR SN 3260 AND HIGHER											
U-10LHREC	2.64 gal / 10L	68-120 °F 20-60 °C	1 - 99 min.	220W / 350W	12 x 9.5 x 6 in.	10.5 x 8 x 4.25 in.	18.6 x 16.2 x 11.5 in.	15.5 x 11.5 in.	26 lbs.	34 lbs.	21 x 19 x 15 in.
U-13LHREC	3.43 gal / 13L	68-120 °F 20-60 °C	1 - 99 min.	300W / 450W	13 x 11.8 x 6 in.	11.5 x 10.5 x 4.25 in.	19.25 x 18.10 x 13 in.	17 x 14 in.	33 lbs.	41 lbs.	23 x 21 x 15 in.
U-19LHREC	4.94 gal / 19L	68-120 °F 20-60 °C	1 - 99 min.	300W / 450W	13 x 11.8 x 8 in.	11.5 x 10.5 x 6.75 in.	19.25 x 18.10 x 15 in.	17 x 14 in.	36 lbs.	44 lbs.	22 x 22 x 17 in.
U-20LHREC	5.06 gal / 20L	68-120 °F 20-60 °C	1 - 99 min.	430W / 650W	20 x 12 x 6 in.	18.5 x 11 x 4.25 in.	26.75 x 18.6 x 13 in.	24.5 x 15 in.	44 lbs.	53 lbs.	29 x 21 x 15 in.
Matching Soaking Tank for U-19LHREC											
ST-19L	4.94 gal / 19L	N/A	N/A	N/A	13 x 11.8 x 8 in.	11.5 x 10.5 x 6.75 in.	19.25 x 18.10 x 15 in.	15.5 x 14 in.	25 lbs	32 lbs	22 x 22 x 17 in.

All new recessed units come standard with above counter access manual drain. Please confirm serial number of recessed unit for correct cut out template <https://www.brandmax.us/literature/>



Call Toll Free: 1-844-874-2532 or 404-418-8499
Email: CustomerService@BrandMax.us

*From Dirty to Clean and Everything
In Between... It's BrandMax Clean!*



Tri-Clean by Brandmax Enzymatic Cleaners

Tri-Clean Enzymatic Cleaners provide superior cleaning power to effectively remove bio-burden. Our proprietary blend of enzymes and pleasant lavender fragrance will leave your instruments cleaner and work area refreshed! Combine Tri-Clean Ultrasonic Cleaners with Tri-Clean Enzymatic Cleaners for the ***Ultimate Cleaning Solution!***



Tri-Clean Eco-System

PROTEASE
attacks proteins
& blood

AMYLASE
attacks starches,
sugars & carbohydrates



LIPASE
attacks body fats
& oils



Call Toll Free: 1-844-874-2532 or 404-418-8499
Email: CustomerService@BrandMax.us



Are Your Instruments Tri-Clean?

Take the **Tri-Clean** Challenge . . .

FEATURE	Tri-Clean	Competitor	BENEFIT
Proprietary blend of Protease, Amylase and Lipase enzymes	✓	?	Effective cleaning and removal of bio-burden
Proprietary surfactant blend to reduce surface tension	✓	?	Wetting action assists in lifting away bio-burden leaving your instruments cleaner
Neutral pH, non-corrosive and contains rust inhibitors	✓	?	Safe for all instruments, metals and surfaces
Soothing color and fragrance	✓	?	Clear visibility of soiled instruments and a refreshing aroma for your work environment
100% made in the USA	✓	?	From raw materials to finished product 100% made in the USA!

ITEM #	DESCRIPTION	DILUTION	QUANTITY
BEC32S	32 oz. Ready-To-Use Foam Spray	ready-to-use	12 quarts / case
BEC32PM	32oz Concentrate, Pre-measure	1 oz. per gallon	12 quarts / case
BEC1	Gallon, Concentrate	1 oz. per gallon	4 gallons / case
GP-25	Pump for gallon size, dispenses 1oz of solution per pump	n/a	1 each

*Want cleaner instruments?
Maintaining an elevated
temperature of 110°F
in your ultrasonic cleaner will
increase enzyme activity and can
improve infection protection!*

Tri-Clean Eco-System

Heat enzymatic
cleaner to 110°F

Powerful
transducers
to remove
bio-burden



Triple enzymatic
cleaner with
Protease,
Amylase and
Lipase enzymes

Call Toll Free: 1-844-874-2532 or 404-418-8499

Email: CustomerService@BrandMax.us



Ultrasonic Cleaner Accessories



Half-Basket

HALF-BASKET BASKETS

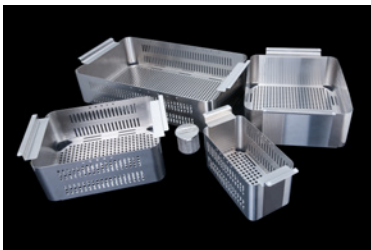
Model #	Order #	Dimensions L x W x H (in.)
U-10LH/REC	UHB-5L	8 x 4 x 4.25
U-13LH/REC	3GHB	11.5 x 5 x 4.25
U-19LH/REC	3GHB	11.5 x 5 x 4.25
U-20LH/REC	UHB-10L	10.5 x 8 x 4.25

INSTRUMENT CASSETTE BASKETS (non-hanging)

- UB-3L Stainless steel instrument cassette basket for 3L
- UB-5L Stainless steel instrument cassette basket for 5L
- UB-10L Stainless steel instrument cassette basket for 10L
- UB-13L Stainless steel instrument cassette basket for 13L
- UB-20L Stainless steel instrument cassette basket for 20L



Handled Baskets



Hanging Baskets

HANGING BASKETS

- UHB-3L Stainless steel hanging basket for 3L
- UHB-5L Stainless steel hanging basket for 5L
- UHB-10L Stainless steel hanging basket for 10L
- UHB-13L Stainless steel hanging basket for 13L
- UHB-19L Stainless steel hanging basket for 19L
- UHB-20L Stainless steel hanging basket for 20L

BURR BASKET

- BB1 Stainless steel burr basket, 2" round with closing lid



Burr Basket



Beaker Holder

BEAKER HOLDER

Diameter of each beaker holder opening is 3.5"

- BH1 Stainless steel beaker holder, for U-5LH, U-10LH and U-10LHREC units
- BH13 Stainless steel beaker holder for U-13LH, U-13LHREC, U-19LH and U-19LHREC units
- BH20 Stainless steel beaker holder for U-20LH and U-20LHREC units

>>> *Serial number and model number required for all parts orders.* <<<

Call Toll Free: 1-844-874-2532 or 404-418-8499

Email: CustomerService@BrandMax.us

Ultrasonic Cleaner Accessories (continued)

ULTRASONIC CLEANER PARTS

- CK2 Converts automatic drain to manual drain on BrandMax recessed units
- FIL1 For all U-3LH, U-5LH, U-10LH units. For 10LHREC and all 13L and 20L units SN 3259 and lower. *Please specify Serial Number and model number when ordering.*
- FIL2 For all 20L, 13L units and 10LHREC serial number 3260 and above. *Please specify Serial Number and model number when ordering.*
- S10 Solenoid Valve for all units. *Please specify model number and serial number when ordering.*

CONTROL PANELS

- CK3 Standard flush mount control panel for recessed units. (11" wide x 6.25" tall)

ENZYME GALLON PUMP

- GP-25 Pump for gallon size, dispenses 1oz of solution per pump.



FIL2 Filter



Hanging Basket



Standard flush mount control panel

>>> Serial number and model number required for all parts orders. <<<

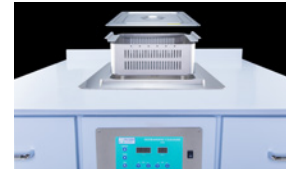
Call Toll Free: 1-844-874-2532 or 404-418-8499

Email: CustomerService@BrandMax.us



*From Dirty to Clean and Everything
In Between... It's BrandMax Clean!*

TRI-CLEAN™ Ultrasonic Cleaner Cross Reference



Company	Model	Recessed	Tank Capacity (Liters/Gallons)	Tank Dimension (in.)	Overall Dimensions (in.)	Cut Out Dimensions (in.)	Cross Reference
Tri-Clean, by BrandMax	U-5LH	No	4L / 1.05 Gal	9.5 x 5.5 x 6	11 x 7 x 10.75		
	U-10LH	No	10L / 2.64 Gal	12 x 9.5 x 6	13.5 x 11 x 11.5		
	U-10LHREC	Yes	10L / 2.64 Gal	12 x 9.5 x 6	18.6 x 16.2 x 11.5	15.5 x 11.5	
	U-13LH	No	13L / 3.43 Gal	13 x 11.8 x 6	14.75 x 13.75 x 13		
	U-13LHREC	Yes	13L / 3.43 Gal	13 x 11.8 x 6	19.25 x 18.10 x 13	17 x 14	
	U-19LH	No	19L / 4.94 Gal	13 x 11.8 x 8	14.75 x 13.75 x 15		
	U-19LHREC	Yes	19L / 4.94 Gal	13 x 11.8 x 8	19.25 x 18.10 x 15	17 x 14	
	U-20LH	No	20L / 5.06 Gal	20 x 12 x 6	21.75 x 13.75 x 13		
SPECIFICATION CHANGES FROM PREVIOUS CATALOGS APPLY TO SN 3260 AND HIGHER	U-20LHREC	Yes	20L / 5.06 Gal	20 x 12 x 6	26.75 x 18.6 x 13	24.5 x 15	
	Cross reference is for capacity only. Existing recessed cut out may require modification.						
Coltene Whaledent	UC95	No	3.55L / .94 Gal	9.38 x 5.75 x 4	11.38 x 7.88 x 7.63		U-5LH
	UC125	No	4.8L / 1.27 Gal	11.25 x 5.63 x 5	16.5 x 10.5 x 13.78		U-5LH / U-10LH
	UC150	Yes	5.7L / 1.50 Gal	11.3x 6.3 x 7	13.58 x 10.86 x 13.97		U-5LH / U-10LH
	UC300	No	14.4L / 3.80 Gal	14 x 9 x 6.73	19 x 12 x 12.25		U-13LH
Health Sonics	T10.4C	Available for all listed models.	10.2L / 2.7 Gal	11 x 9 x 6	13 x 11.5 x 10.3	12.375 x 10.125	U-10LH / U-10LHREC
	T10.4CS		12.1L / 3.2 Gal	11 x 9 x 8	13 x 11.5 x 12.3	12.375 x 10.125	U-13LH / 19LH / U-13LHREC / 19LHREC
	T13.7C		13.2L / 3.5 Gal	12.5 x 11 x 6	14 x 14 x 10.7	13.75 x 12.5	U-13LH / U-13LHREC
	T19.9C		19L / 5 Gal	19.9 x 11.9 x 6.2	20.8 x 13.5 x 12.2	20.375 x 12.5	U-20LH / U-20LHREC
L & R	Quantrex 140	No	3.2L / .85 Gal	9.38 x 5.38 x 4	10.25 x 6.5 x 8.25		U-5LH
	Quantrex 210	No	5.7L / 1.51 Gal	11.75 x 6 x 6	12.75 x 7 x 11		U-5LH
	Quantrex 310	No	12.3L / 3.25 Gal	15.5 x 9 x 6	16.5 x 10 x 12.13		U-13LH
	Quantrex 360	No	13.6L / 3.59 Gal	11.5 x 9.25 x 8	12.75 x 10.5 x 14.25		U-13LH / U-19LH
	Quantrex 650	No	24.6L / 5.5 Gal	19.75 x 11.75 x 6.5	21.75 x 13.75 x 12.7		U-20LH
	SweepZone 200	No	4.0 L / 1.06 Gal	11.75 x 6 x 4	12.68 x 6.88 x 8.75		U-5LH / U-10LH
	SweepZone 310	No	12.3 L / 3.25 Gal	15.5 x 9 x 6	15.5 x 10 x 2		U-13LH
	SweepZone 310R	Yes	12.3 L / 3.25 Gal	15.5 x 9 x 6	16.25 x 10.13 x 6.25	16.25 x 9.69	U-13LHREC
	SweepZone 360R	Yes	13.6 L / 3.59 Gal	11.5 x 9.25 x 8		12.31 x 10.25	U-13LHREC / U-19LHREC
	SweepZone 650R	Yes	24.6 L / 6.5 Gal	19.75 x 11.75 x 6.5		20.6 x 12.69	U-20LHREC
MidMark	M150	No	5.7L / 1.5 Gal	11.5 x 6 x 6	12 x 16 x 14.5		U-5LH
	M250	No	9.5L / 2.5 Gal	11.5 x 9.5 x 6	15.5 x 16 x 14.5		U-13LH
	M550	No	20.8L / 5.5 Gal	19.5 x 11.5 x 6	18 x 24 x 14.5		U-20LH
	QC1	No	4.5L / 1.2 Gal	11.8 x 5.9 x 5.9	13.5 x 10.2 x 10.4		U-5LH
	QC3	No	12.5L / 3.3 Gal	13.0 x 11.8 x 5.9	14.7 x 16.5 x 10.4		U-13LH / U-19LH
	QC6	No	25L / 6.6 Gal	19.9 x 11.8 x 7.9	21.6 x 13.7 x 14.3		U-20LH
	QC3R	Yes	12.5L / 3.3 Gal	13.0 x 11.8 x 5.9		15.55 X 14.37	U-13LHREC / U-19LHREC
	QC6R	Yes	25L / 6.6 Gal	19.9 x 11.8 x 7.9		22.48 x 14.37	U-20LHREC
Sonix 4	126	No	10.2L / 2.7 Gal	11.5 x 9.5 x 6	12.2 x 10 x 11.62		U-10LH
	SR126	Yes	10.2L / 2.7 Gal	11.5 x 9.5 x 6	16 x 14 x 15.25	15.375 x 13.125	U-10LHREC
	236	No	13.6L / 3.6 Gal	11.5 x 12.8 x 6	16.5 x 17.5 x 13.25		U-13LH
	SR236	Yes	13.6L / 3.6 Gal	11.5 x 12.8 x 6		15.5 x 16.5	U-13LHREC
	128	No	13 L / 3.4 Gal	11.5 x 9.5 x 8	12.2 x 10 x 11.62		U-10LH / U-13LH / U-19LH
	SR128	Yes	13 L / 3.4 Gal	11.5 x 9.5 x 8	16 x 14 x 15.25	15.375 x 13.125	U-13LHREC / U-19LHREC
	118	No	29.5 L / 7.8 Gal	19.5 x 11.5 x 8	20.2 x 12.12 x 13.62		U-19LH / U-20LH
	SR118	Yes	29.5 L / 7.8 Gal	19.5 x 11.5 x 8	24.3 x 16.2 x 15.25	23.5 x 15.5	U-20LHREC / U-19LHREC

For counter top units, please add 2" to length dimension for external drain spout.

Call Toll Free: 1-844-874-2532 or 404-418-8499 | Email: CustomerService@BrandMax.us



3 Basic Steps for Effective Instrument Cleaning

STEP 1

Instrument Pre-soak

Purpose of this step is to prevent bio-burden from hardening which makes the instruments difficult to clean, increases cleaning time and can cause pitting and damage to instruments.

- Safely transport instruments to facility decontamination area.
- Spray and completely cover instruments with BrandMax Tri-Clean® Triple Enzyme Foam.
- Do not allow bio-burden to dry, re-apply as necessary.
- Rinse instruments thoroughly.

STEP 2

Cleaning Process

Purpose of this step is to clean the entire surface area of instrument to ensure an effective sterilization.

- Add 1 oz. per gallon of water of BrandMax Tri-Clean® Triple Enzymatic cleaner.
- Prepare your ultrasonic cleaner by heating to 110°F and degas for 15 minutes prior to use each day. *(Note: temperature not to exceed 120°F).*
- Carefully add soiled instruments to the ultrasonic tank and set timer for 10 – 15 minutes. *(Note: for heavily soiled instruments, longer soaking time may be necessary).*
- Carefully remove and rinse instruments thoroughly using drain transport device.
- Air or pat dry instruments with clean towel. *(Note: non-looped absorbent Huck towel is common).*
- Visually inspect instruments to confirm thorough cleaning, if debris is present repeat cleaning process.

STEP 3

Prep for Sterilization

- Place cleaned instruments in a sterilization pouch. *(Note: place hinged instruments in the open position).*
- Place sealed instrument packages in the sterilizer per your facility's protocol.

PRODUCTS

BrandMax Tri-Clean® Triple Enzymatic Cleaners:

BEC1 – Triple Enzymatic Cleaner Concentrate
[Gallon]

BEC32S – Triple Enzymatic Foam, Ready-to-Use Spray
[Quart]

BEC32PM – Triple Enzymatic Cleaner Concentrate, Pre-Measure
[Quart]

*From Dirty
to Clean and
Everything
In Between...
It's
BrandMax
Clean!®*

TIPS

Why is heat important?

Heat maximizes enzymatic activity which helps your cleaning process be more effective (note: temperature not to exceed 120°F).

DO use demineralized water.

DO replace enzymatic solution at least daily or when visibly soiled.

The above instructions are meant to serve as a general guideline to instrument cleaning. Please contact your instrument's manufacturer if additional clarification is needed.

Call Toll Free: 1-844-874-2532 or 404-418-8499
Email: CustomerService@BrandMax.us

ultrasonic cleaners

enzymes



*From Dirty to Clean and
Everything In Between...
it's BrandMax Clean!®*

Call Toll Free: 1-844-874-2532 or 404-418-8499
2200 McFarland 400 Blvd. • Alpharetta, GA 30004
Email: CustomerService@BrandMax.us
For Repair Inquiry: Repair@BrandMax.us

Supporting Oral Health For Better Health.™

Get a *FREE* 30 day Supply of
Tri-Clean Triple Enzymatic Cleaner!

(no purchase necessary)



Dental Office Name
Address to Send Samples
Contact Name
Contact Email
Contact Phone

Instructions - Simply take a picture of your information
and email to CustomerService@BrandMax.us



Ultrasonic Cleaner
not included.



Contact Us Today... 844-874-2532
CustomerService@BrandMax.us | www.BrandMax.us

